
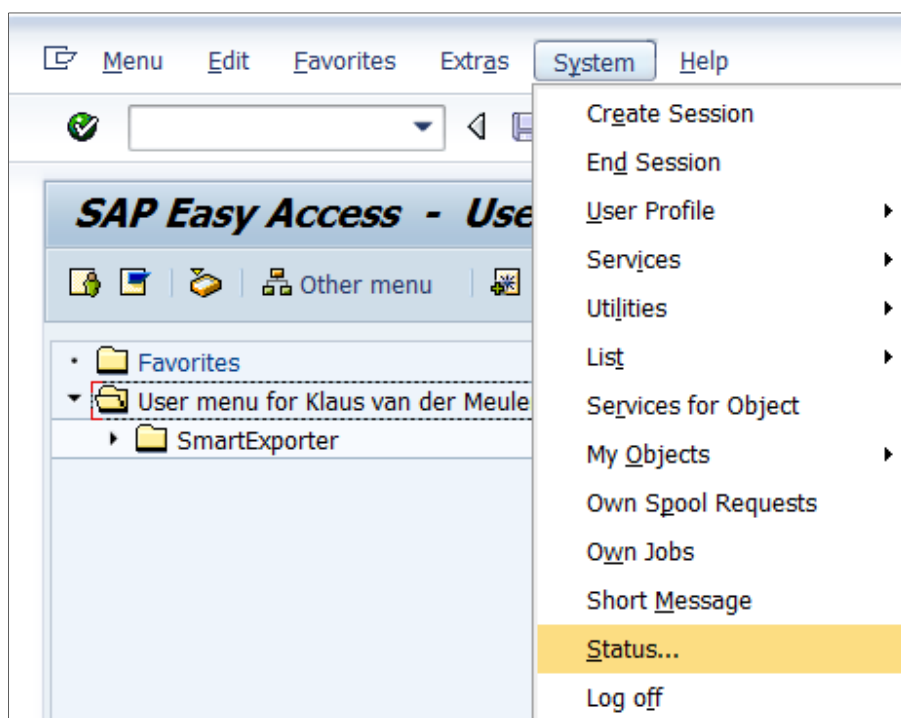


Checking the SAP® base release

Please note that the SAP® Components CD or the download package only contains the installation for the SAP® base releases 640 and 7xx. The SmartExporter SAP® components for the base releases 46C and 620 are deployed as a separate installation. If you require the SmartExporter SAP® components for 46C and 620 please send an e-mail to: distribution@audicon.net.

In order to check the release version of your SAP® base release please follow the steps below:

1. Please log on to your SAP® Server using the SAP® Logon Pad .
2. In the **System** menu select the **Status...** entry.



3. The **System: Status** dialog is displayed:

4. Click the icon underneath the **Component version** field. The **System: Component information** dialog is displayed:

Software Compon...	Release	Level	Highest Support P...	Short Description of Software Component
SAP_ABA	701	0005	SAPKA70105	Cross-Application Component
SAP_BASIS	701	0005	SAPKB70105	SAP Basis Component
PI_BASIS	701	0003	SAPK-70103INPI...	Basis Plug-In
ST-PI	2008_1_700	0006	SAPKITLRD6	SAP Solution Tools Plug-In
SAP_BS_FND	701	0002	SAPK-70102INSA...	SAP Business Suite Foundation
SAP_BW	701	0003	SAPKW70103	SAP Business Warehouse
LCAPPS	2005_700	0005	SAPKIBHD05	LC Applications (LCAPPS) 2005_700
SAP_AP	700	0015	SAPKNA7015	SAP Application Platform

5. For the release version please refer to the lines **SAP_ABA** and **SAP_BASIS**.